

# Entrance & Exit AI LPR Pro Bullet Plus Camera

IP67 +IK10

Motorized Lens



DATASHEET

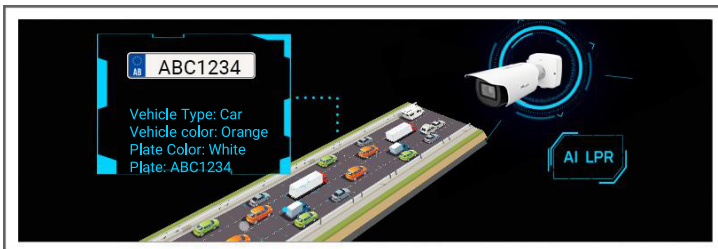
NDAA

## KEY FEATURES

Superior Image Quality (Starlight Sensor, Smart IR II Technology and high frame rate are supported for an excellent image quality.)  
 LPR Smart Search (Relevant videos can be found quickly by searching for only a portion of the target suspect vehicle's features, such as vehicle type & color, plate color, plate number, direction and etc.)

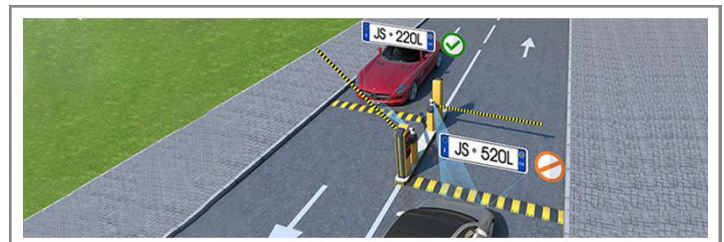
### Intelligent AI-powered LPR Algorithm

Entrance & Exit AI LPR Camera can not only recognize vehicle plates in real time, but also identify more vehicle features, like vehicle type, color, etc., generating reliable traffic insights to improve safety and mobility.



### Black and White List and No-plate Event

Entrance & Exit AI LPR Camera enable to achieve stand-alone solutions for license plate recognition as well as no-plate vehicle detection. Alarm is triggered as soon as the corresponding rule-compliant license plate is detected, enabling efficient and accurate access control at any gate.



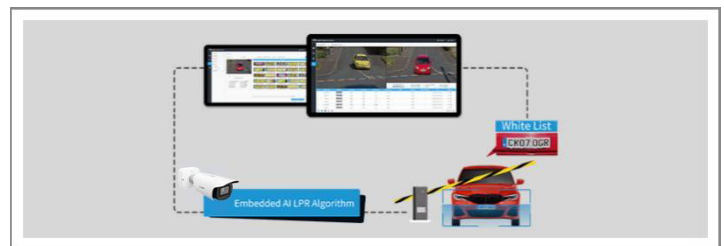
### Evidence Camera Linkage

Entrance & Exit AI LPR Camera can link with any regular cameras to capture the evidence. Thanks to the seamless trigger between the LPR camera and the regular camera, users can easily provide solid and convincing evidence with LPR results together with overview snapshots and critical details.



### Easy and Flexible Deployment

Entrance & Exit AI LPR Cameras enable a standalone license plate recognition solution for fast implementation scenarios with high efficiency and accuracy. It can also be used with NVR, CMS and VMS Enterprise, to form a fully closed-loop traffic solution.



# Entrance & Exit AI LPR Pro Bullet Plus Camera



	Model	MES-LPR
<b>Camera</b>	Image Sensor	1/1.8" Progressive Scan CMOS
	Min. Illumination	Color: 0.001Lux@F1.2 B/W: 0Lux with IR on
	WDR	Support
	Shutter Time	1/100000s~1s
	Day/Night Mode	Day/Night/Auto/Customize/Schedule
	IR Wave Length	850nm (Default); 740nm (Optional)
	Illumination Distance	Up to 20m
	S/N	>55dB
<b>Lens</b>	Lens	Motorized 2.8~12mm@F1.2
	Field of View	H114°~H45°/ D116°~D51°/ V57°~V25°
	Mount	Φ14
	P-Iris	Support
	Focus Control	Auto/Manual
<b>Entrance &amp; Exit Management</b>	Max. Vehicle Speed	60km/h
	Capture Rate	99%
	Recognition Accuracy	98%
	Coverage	2 lanes
	Country/Region Supported	More than 80 countries and regions
	ANPR Distance	Up to 15m
	Attributes Identification	Plate Color, Vehicle Type, Vehicle Color, Vehicle Brand, No-plate Vehicle Capture, Vehicle Direction Detection <small>* Vehicle Color and Plate Color identification are not supported in low-light or night conditions.</small>
	Smart Traffic Function	Evidence Camera Linkage
	White/Black List	Up to 100,000 records inside the camera
	LPR Smart Search	Support
<b>Interface</b>	Ethernet	1*RJ45 10M/100M Ethernet Port
	Audio I/O	1/1
	Alarm Input	2
	Alarm Output	2 (1 relay output; 1 open collector output, max. 12V DC/10mA)
	Wiegand	1
	RS485	1
<b>Video</b>	Max. Image Resolution	2688x1520
	Primary Stream	60Hz: 60fps@(2688x1520, 2304x1296, 1920x1080, 1280x720) 50Hz: 50fps@(2688x1520, 2304x1296, 1920x1080, 1280x720)
	Secondary Stream	60Hz: 60fps@(704x576, 640x480, 640x360, 352x288, 320x240) 50Hz: 50fps@(704x576, 640x480, 640x360, 352x288, 320x240)

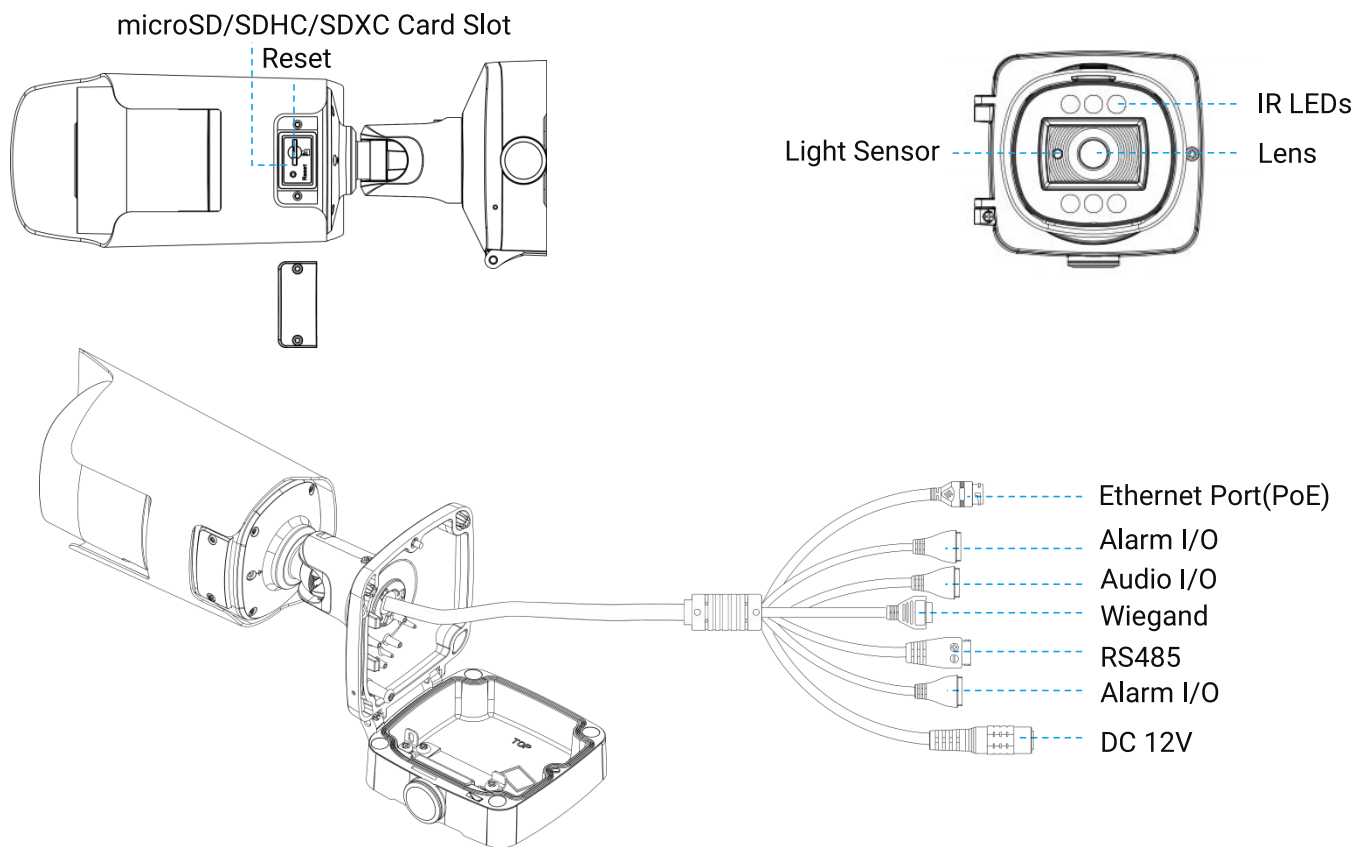
# Entrance & Exit AI LPR Pro Bullet Plus Camera



	Tertiary Stream	60Hz: 30fps@(1920x1080, 1280x720, 704x576, 640x480, 640x360, 352x288, 320x240) 50Hz: 25fps@(1920x1080, 1280x720, 704x576, 640x480, 640x360, 352x288, 320x240)
	Video Compression	H.265+/H.265(HEVC)/H.264+/H.264/MJPEG
	Video Bit Rate	16Kbps~16Mbps(CBR/VBR Adjustable)
	Privacy Masking	Up to 8 Areas (Mask Area and Mosaic Area are optional)
	ROI	Up to 8 areas
	Image Setting	Brightness/Contrast/Sharpness
<b>Network</b>	Network Storage	NAS(Support NFS, SMB/CIFS), ANR
	Protocol	IPv4/IPv6, ARP, TCP, UDP, RTCP, RTP, RTSP, RTMP, HTTP, HTTPS, DNS, DDNS, DHCP, FTP, NTP, SMTP, SNMP, UPnP, Bonjour, SIP, PPPoE, VLAN, 802.1x, QoS, IGMP, ICMP, SSL
<b>Audio</b>	Audio Compression	G.711/AAC/G.722/G.726
	Audio Sampling Rate	8/16/32/44.1/48KHz
	Audio Bit Rate	16~256kbps
	Two-way Audio	Support
<b>System</b>	System Compatibility	API, MQTT, HTTP, TCP, ONVIF Profile G & M & S & T
	Storage	microSD/SDHC/SDXC Card Local Storage, up to 1TB
	Advanced Function	BLC, HLC, 2D DNR, 3D DNR, Defog, AWB, IP Address Filtering, AGC, EIS, Anti-flicker, Corridor Mode, Deblur, Watermark
	SIP/VoIP Support	Yes, Voice & Video-over-IP
	Event Trigger	Black/White List, Motion Detection, Network Disconnection, External Input, Audio Alarm, etc.
	Event Action	FTP Upload, SMTP Upload, SD Card Record, External Output, SIP Phone, HTTP Notification, etc.
<b>General</b>	Working Temperature	-40°C~60°C
	Working Humidity	0~95%(Non-condensing)
	Power Supply	PoE (802.3af) / DC 12V±10%
	Power Consumption	Min.: 2.78W (DC 12V), 3.62W(PoE) Max.: 8.57W (DC 12V), 10.54W(PoE)
	Weather Proof	Up to IP67-rated for Weather-resistant Performance
	Housing	Vandal-proof IK10-rated Metal Housing
	Weight	1300g
	Dimensions	346mmX134mmX126mm
	Warranty	3/5 Years
<b>Certifications</b>	EMC	CE-EMC (EN 55032, EN 55035), FCC (PART 15B), RCM-EMC (AS/NZS CISPR 32:2015+A1(2020))
	Safety	CE-LVD (EN IEC 62368-1), RCM-LVD (IEC 62368-1:2018)
	Environment	CE-ROHS (Directive (EU) 2015/863 amending 2011/65/EU)



## Structure Diagrams



Units: mm

## Accessories Support

### A02 V2 Pole Mount

Weight: 1kg

Dimensions: 180\*136\*46mm



### A03 External Corner Bracket

Weight: 900g

Dimensions: 170\*152.5\*76.3mm

